

CONCEPT PLAN PACKAGE
Site 1
Park Avenue/70th Street (Guttenburg)

- List of Issues/Proposed Improvements
- Aerial
- Problems/Issues Map
- Improvement Concept Plan
- Preliminary Cost Estimate

North Hudson Pedestrian and Bicycle Concept Plans Final Report

Park Avenue and 70th Street

Problems/Issues

- Limited sight distance from structure and parked vehicles.
- Frequent bus stops, significant pedestrian activity, and vehicle/pedestrian conflicts.

Improvement Concepts

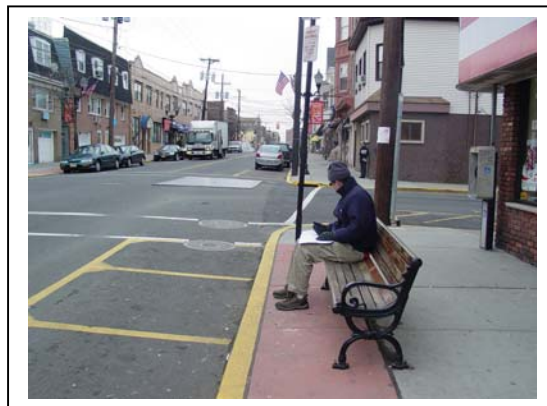
- Expand bus stop length on Park Avenue so that buses will fit curb side.
- Provide curb extension on Park Avenue to improve 70th Street sight distance.
- Decrease advanced stop distance on 70th Street.
- Provide separate curb ramps for each crosswalk.
- Provide detectable warnings on all existing ramps.



Park Avenue and 70th Street



New eastbound cross Park Avenue along 70th Street



View southbound along Park Avenue toward 70th Street



PLANS PREPARED FOR:

The **RBA** Group
ENGINEERS • ARCHITECTS • PLANNERS
One Evergreen Place
Morristown, New Jersey 07062
N.J. AUTHORIZATION CERTIFICATE NO. 24GA27930500
Phone (973) 898 0300, Fax (973) 898-9472

REVISIONS

NO.	DATE	COMMENTS

NORTH HUDSON COUNTY -
BICYCLE AND PEDESTRIAN STUDY

PARK AVENUE AND
70TH STREET

DATE:
JOB NUMBER: J3536.00
SCALE: 1"=50'
DRAWN BY:
CHK. BY:
SHEET NUMBER

PLOT DATE: 04/28/2005
PLOT TIME: 02:11:14 PM

PLANS PREPARED FOR:
**NORTH HUDSON COUNTY
 BICYCLE AND PEDESTRIAN STUDY**

The RBA
 Group, Inc.
 ENGINEERS ARCHITECTS PLANNERS
 One Evergreen Place
 Morristown, New Jersey 07062
 Phone (973) 898 0300, Fax (973) 898-9472

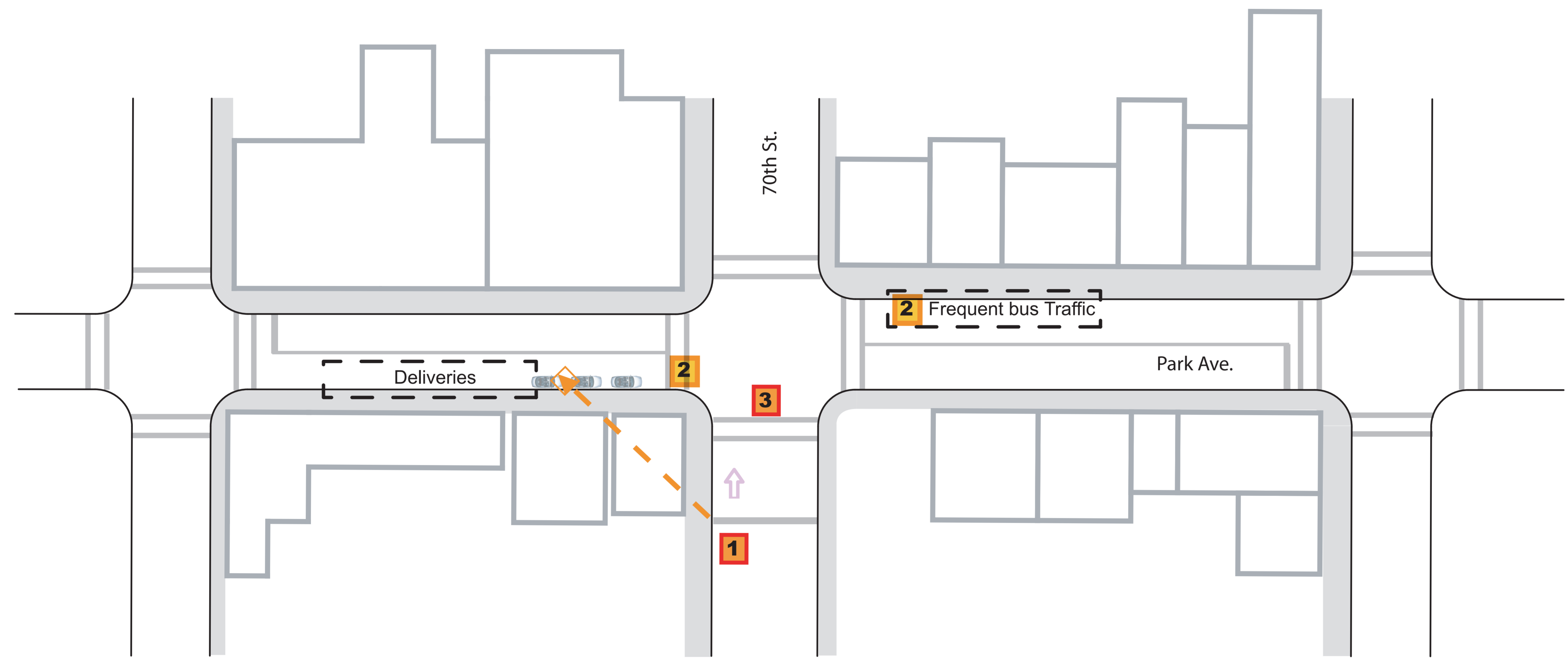
REVISIONS		
NO.	DATE	COMMENTS

**TRAFFIC ISSUES
 & CONFLICTS**

**PARK AVENUE AND
 70TH STREET**

DATE: MAY 17, 2005
 JOB NUMBER: J3536.00
 SCALE: 1"=50'
 DRAWN BY: KC
 CHK. BY: MD

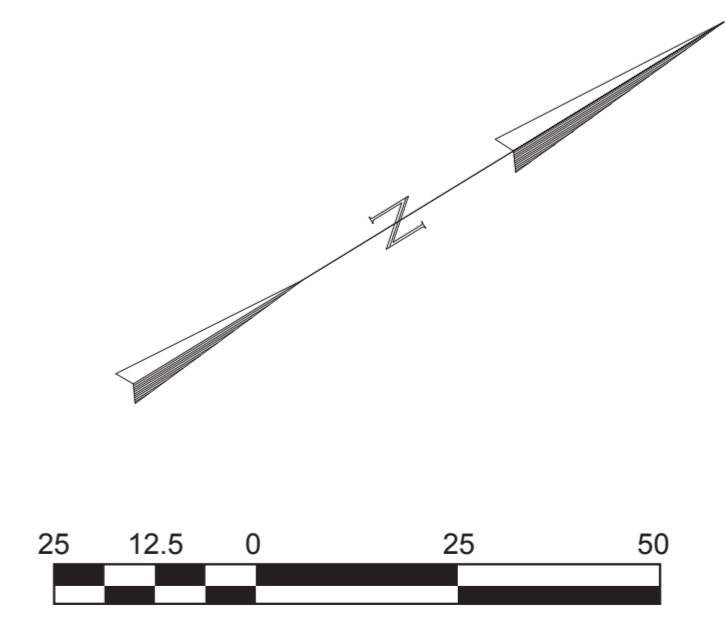
SITE NUMBER
1

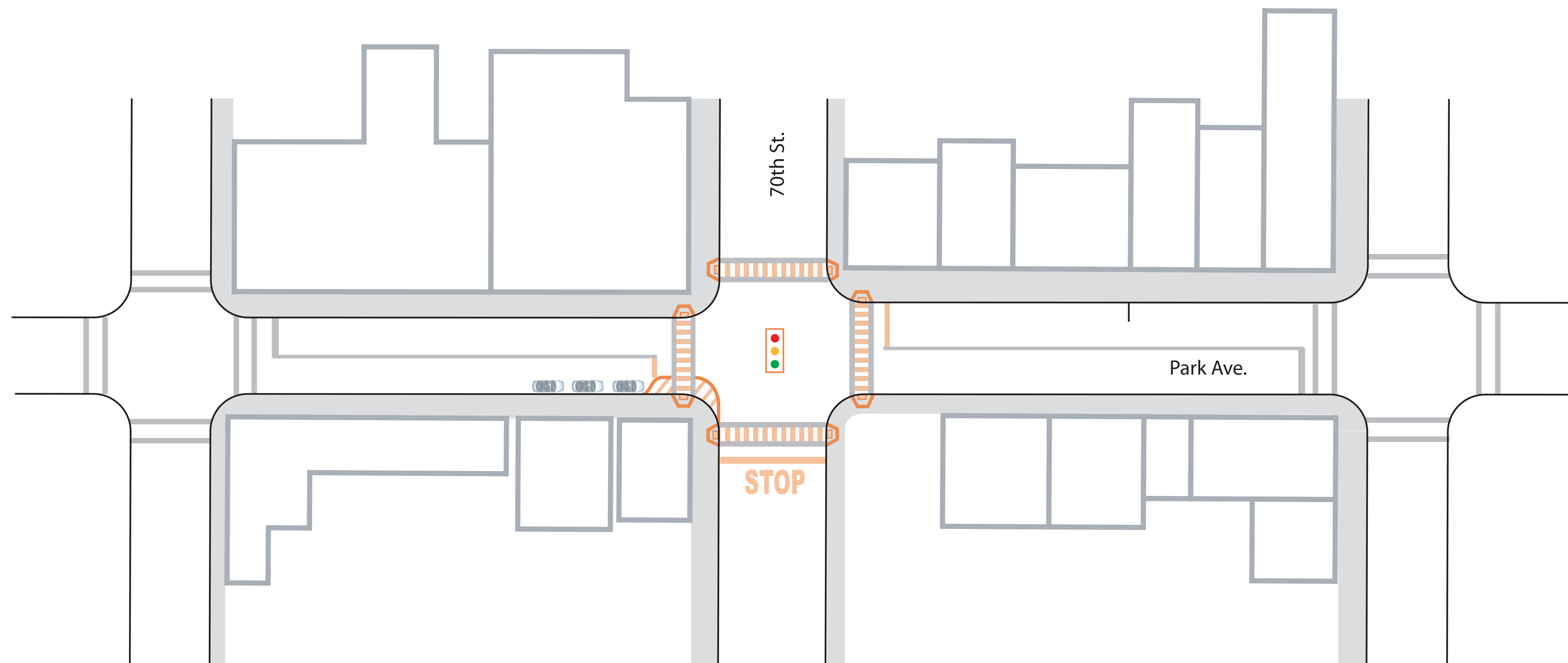


TRAFFIC ISSUES AND CONFLICTS

- Motorized Conflicts
- Pedestrian Conflicts
- Traffic Flow

1. Limited sight distance from building and parked vehicles
2. Frequent bus stops, significant pedestrian activity, and vehicle/pedestrian conflicts
3. Difficult crossing or left turn movement for motor vehicles





RECOMMENDATIONS

1. Consider providing traffic signal
2. Provide striped curb extension on Park Ave. to improve 70th St. sight distance, "daylight" the intersection
3. Decrease advanced stop distance on 70th St.
4. Provide separate curb ramps for each crosswalk
5. Provide detectable warnings on all curb ramps
6. Provide high visibility ladder style striping for all four crosswalks

PLANS PREPARED FOR:
**NORTH HUDSON COUNTY
 BICYCLE AND PEDESTRIAN STUDY**

The RBA
 Group, Inc.
 ENGINEERS ARCHITECTS PLANNERS
 One Evergreen Place
 Morristown, New Jersey 07062
 Phone (973) 898 0300, Fax (973) 898-9472

REVISIONS

NO.	DATE	COMMENTS

RECOMMENDATIONS

**PARK AVENUE AND
 70TH STREET**

DATE: MAY 17, 2005
 JOB NUMBER: J3536.00
 SCALE: 1"=50'
 DRAWN BY: KC
 CHK. BY: MD

SITE NUMBER
1

North Hudson County Pedestrian and Bicycle Study
Preliminary Cost Estimate for Site Work
El Taller Colaborativo, P.C.

June, 2005

Site Number 1 - Park Avenue and 70th Street

<i>IMPROVEMENT</i>	<i>QUANTITY</i>	<i>UNIT</i>	<i>UNIT PRICE</i>		<i>TOTAL</i>
Clearing Site				\$	2,000.00
Construction Layout				\$	3,000.00
Remove existing concrete sidewalk	1,495	sq.ft.	\$ 2.30	\$	3,438.50
Remove existing concrete curb	155	lin.ft.	\$ 4.30	\$	666.50
New concrete curb	155	lin.ft.	\$ 18.00	\$	2,790.00
New concrete pavement	1,495	sq.ft.	\$ 4.00	\$	5,980.00
Detectable warning panel at ramps	8	each	\$ 385.00	\$	3,080.00
Asphalt pavement replacement along new curb	465	sq.ft.	\$ 5.00	\$	2,325.00
Crosswalk striping	600	lin.ft.	\$ 2.00	\$	1,200.00
Stop bar and lane striping	70	lin.ft.	\$ 5.75	\$	402.50
Other striping	240	sq.ft.	\$ 2.60	\$	624.00
Relocation of drainage structures and other utilities	1	l.s.	\$ -	\$	5,225.00
New traffic signal (optional)	1	each	\$ 85,000.00	\$	85,000.00
			Sub-total	\$	115,731.50
Traffic Maintenance			7%	\$	8,101.21
Mobilization			9%	\$	10,415.84
			20% contingency	\$	23,146.30
			Total	\$	157,394.84